

BASKET OF THANKS TEMPLATE

COORDINATING STAMP SET: FALL STUDIO

DESIGNED BY SUE BERKER

clear &
simple
S T A M P S



BASKET OF THANKS TEMPLATE

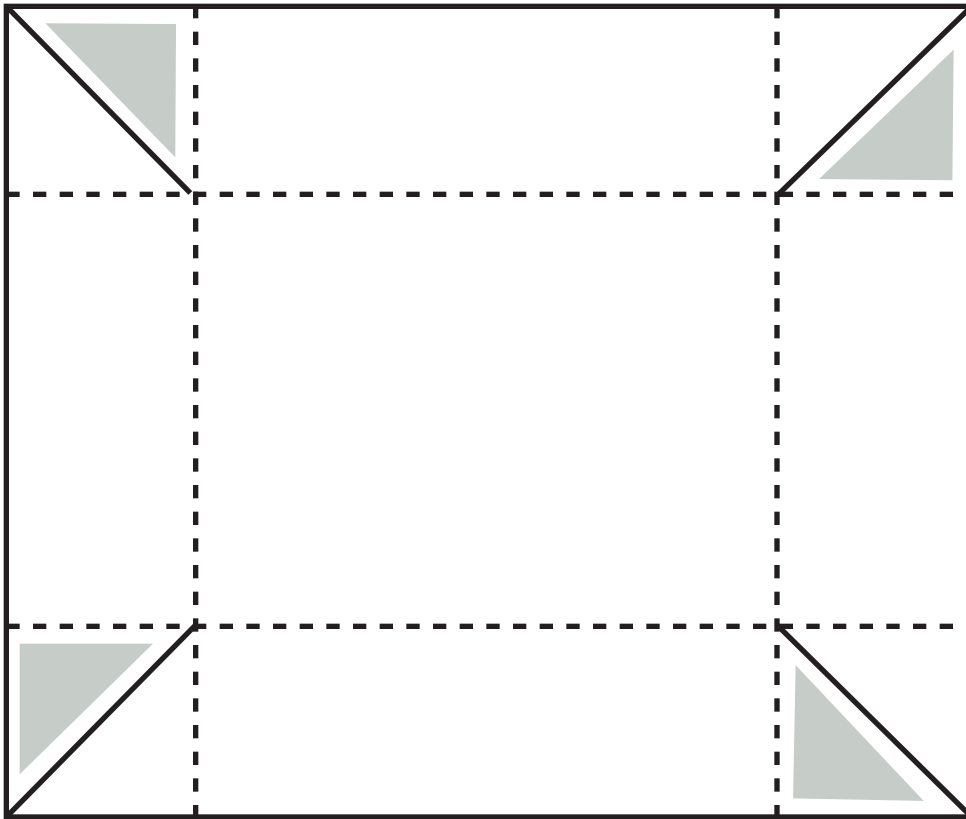
COORDINATING STAMP SET: FALL STUDIO

DESIGNED BY SUE BERKER

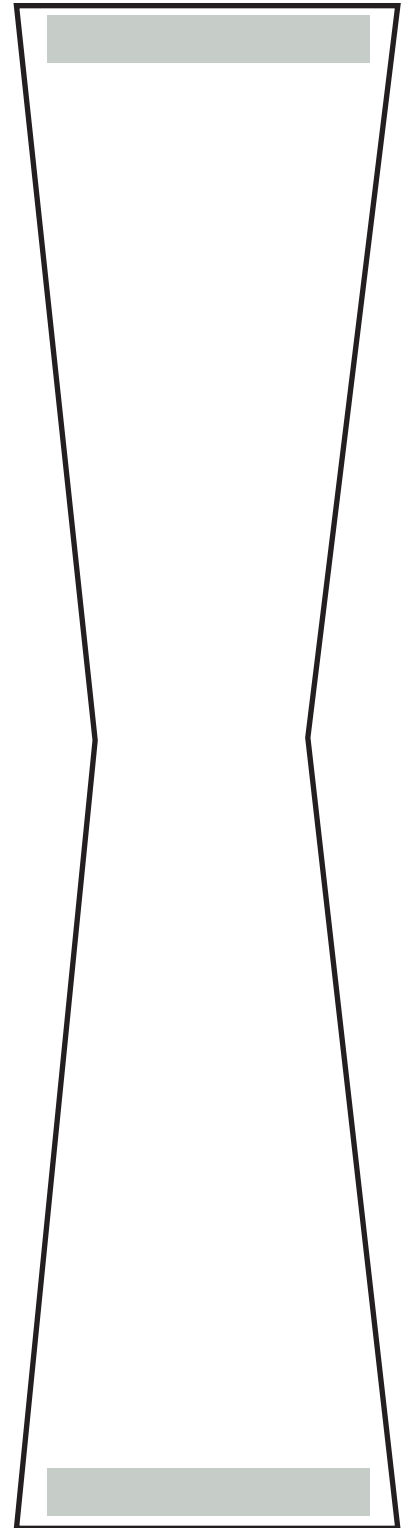
Supplies:

Scor-Pal; Scor-Tape; Scissors; 1 Sheet of 8.5 x 11 Paper

BASKET FRAME



BASKET HANDLE



Basket Assembly:

Cut cardstock 4 1/4" x 5"

Score at 1" on all 4 sides

Cut diagonal slits on corners

Adhere corners and

Fold over extra flap

----- Dotted lines = FOLD

——— Solid lines = CUT

■ Shading = ADHESIVE